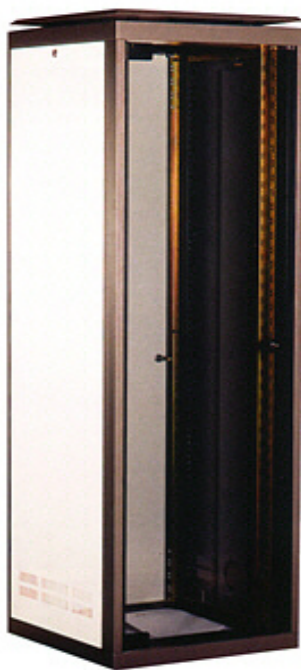


**MASSIVE STOCK CLEARANCE**  
**SALE - 19" data network cabinets - 75% OFF**

**41U 19" cabinet. 600 & 800mm wide**



41U 600W x 800D  
 KM-107.13.41  
**£150+Vat .75% OFF**



**Wide** 41U 800W x 800D  
 KM-109.13.41  
**£150+Vat. 75% OFF**

- Height: 41U (2000mm)
- Colour: Beige & Dark brown, RAL 9002 & 7022.
- Built in steel and aluminium.
- 6mm smoked security glass door with lock.
- 2 removable side panels with lock.
- 1 plain back door with lock.
- .Adjustable roof for a better ventilation.
- KM-107.13.41: 600mm wide.
- KM-109.13.41: 800mm wide with more room on both side for heavy cabling.
- See options available to cover the bottom gap.



**Included parts**



4 fan top ventilation unit

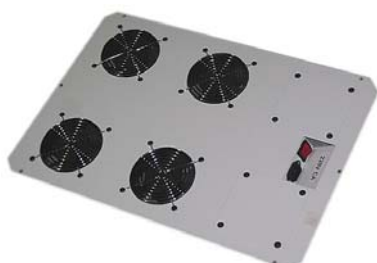


25 x nuts, bolts & washers



Adjustable rubber feet

**Optional parts for this cabinet**



4 fan bottom unit 117.06.04 **£90**

or



2 fan bottom unit 117.06.22 **£70**

or



Base cover 112.53.00 **£15**

## 41U 19" cabinet. 800 & 900mm deep



41U 600W x 800D  
KM-300.68.41  
£150+Vat. 75% OFF



Deep 41U 600W x 900D  
KM-301.69.41  
£150+Vat. 75% OFF

- Colour: Beige & Dark brown, RAL 9002 & 7022.
- Built in steel and aluminium.
- 6mm smoked security glass door with lock.
- 2 removable side panels & 1 plain back door all with lock.
- Adjustable roof for a better ventilation.
- See options available to cover the bottom gap.



### Included parts



4 fan top ventilation unit

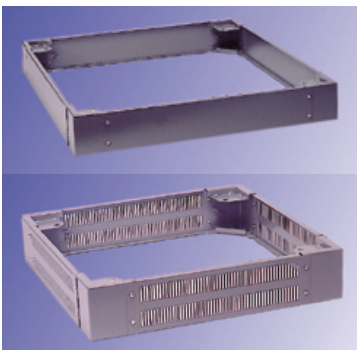


25 x nuts, bolts & washers

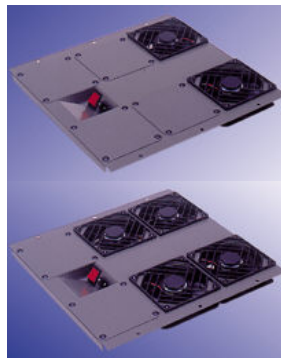


Adjustable rubber feet

### Optional parts for this cabinet



Plinth 117 x 600 x 800 £50  
**For KM-300.68.41 only**  
Without vent holes 324.68.00  
With vent holes 324.68.01



2 fan bottom unit 327.33.12 £70  
4 fan bottom unit 327.33.14 £90



Base cover 323.13.02 £10  
3Pcs are required to cover the whole gap

## 46U 19" cabinet with 3 independent compartments

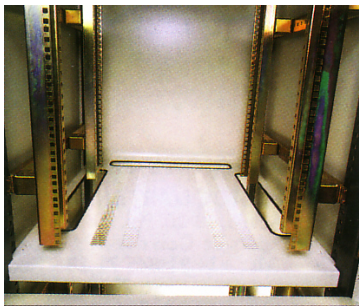


46U 600W x 800D  
KM-306880246  
£200+Vat. 75% OFF



Rear view

- Height: 46U (2200mm)
- Colour: Beige & Dark brown, RAL 9002/7022.
- Build in steel and aluminium.
- 3 front doors with 6mm security smoked glass & independent key sets.
- 2 removable side panels with lock.
- 3 plain back doors with independent key sets.
- 1 master key to open all doors.
- Each compartments is about 63cm high.
- Adjustable roof for a better ventilation.



Inside view



Glass door



Lock

### Included parts



4 fan top ventilation unit



25 x nuts, bolts & washers



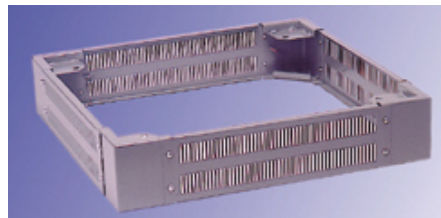
Adjustable rubber feet

### Optional parts for this cabinet



Plinth 117 x 600 x 800 **£50**  
Without vent holes 324.68.00

or



Plinth 117 x 600 x 800 **£50**  
With vent holes 324.68.01

## More optional Parts (suitable for all cabinets)



Front Fixing Tray **£17**



4U Gap Cover plate **£15**



2U Gap Cover plate **£10**



Front Cable entry panel **£10**



Cable tidy bar **£15**



Cable organizer **£15**



4 x Castors **£50**



Power cord **£2**



5x Earth connection cables **£10**



Telescopic rails **£24**



Thermostat **£40**



Bolts, Nuts & Washers **£8**



19" 2 fan unit **£60**

Tel: **+44 (0)1592 655 111** Email: **sales@evercase.co.uk**

**www.evercase.co.uk**

Evercase Technology (UK) Ltd, Unit 4, Randolph Court, Randolph Ind. Est., Kirkcaldy, KY1 2YY, UK

\*All prices exclude VAT and Postage.

Prices may vary without prior notice. Check website for updated prices.

