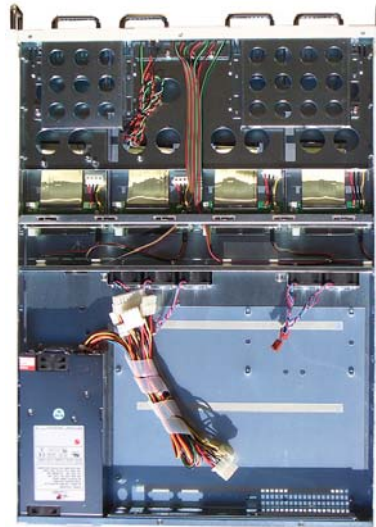
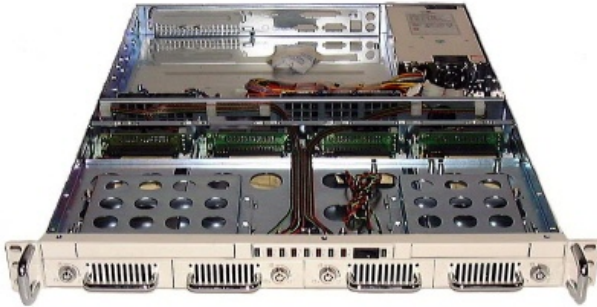
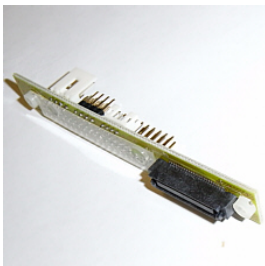


ECR9105B 1U 19" Rackmount

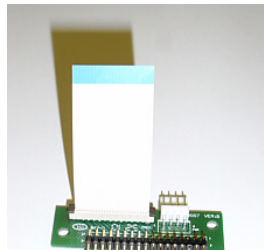


Features

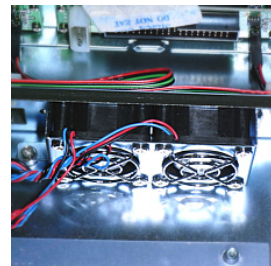
- High-density 1U rackmount server chassis available in Beige or Black.
- Slim CD-ROM & slim FDD drive bays. (Includes IDE converters).
- 4 x IDE Swappable HDD bays with key locks.
- Backplane: 4 x Swappable EIDE Backplane.
- Includes a 32Bit PCI Riser Card. Ask for other type of riser cards.
- 5 x High performance 40mm fan included.
- Dual processors capability. Ultra flexible storage devices allocation.
- Unique tool-free maintenance design. Slide-in Mainboard plate for easy installation.
- Takes Micro ATX, ATX motherboard (not extended ATX).
- Option: Sliding rail kits available for installation in cabinet. Ref SLR3500
- Meets CE, FCC requirements. Full set electro-plate anti-rust processing.
- Available in beige ECR9105 or black ECR9105B.
- Does not take standard I/O shield. Please see below the only types of back windows available.



Slim CD to IDE converter.



Slim FDD to Standard FDD converter.



2 of the 5 included fans.

Specifications

Model number	ECR9105B
5.25" Exp / Hidd	1 Slim CD
3.5" Exp / Hidd	4xIDE Swappable HDD, 1xSlim FDD
Mainboard	Micro ATX, ATX
Power Supply	250W 20pin, 4Molex, 2Floppy connectors Ask for additional connectors.
Ventilation	5x40mm Fans. Included.
Dim: HxWxD	44x425x595mm (635 with handles)
Weight: NW/GW	8 kg / 10 kg
Packing	UK pallet: 30Pcs



Optional rails for installation in cabinet.



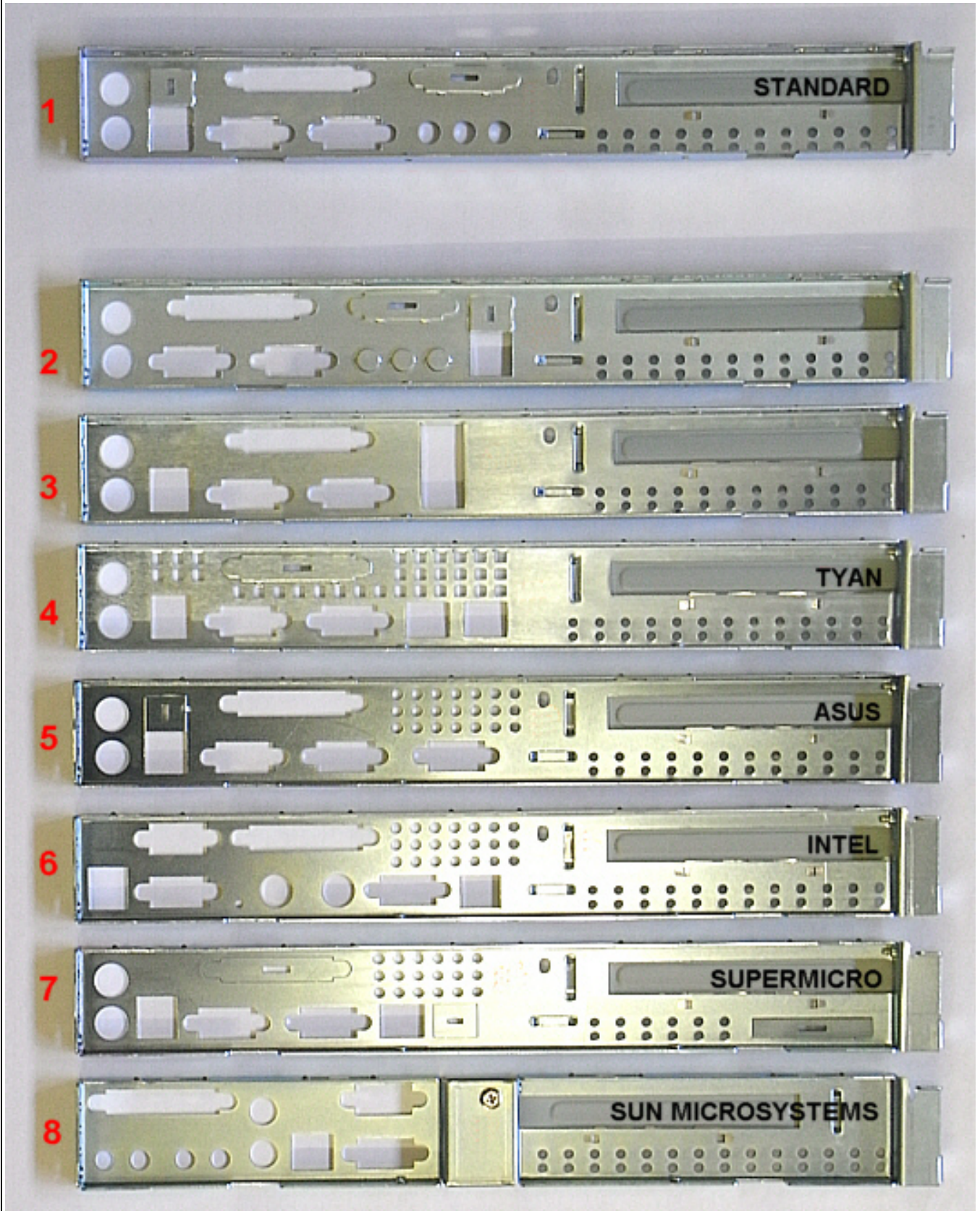
Ever Case Technology (UK) Ltd.

Tel: 01592 655 111, Fax: 01592 655 666

E-mail: sales@evercase.co.uk Web: www.evercase.co.uk



Back Windows available for the ECR9105B 19" Rackmount



Should none of the back windows above be suitable, the rack could be used with no back window and no PCI card at all, leaving an open gap at the rear.